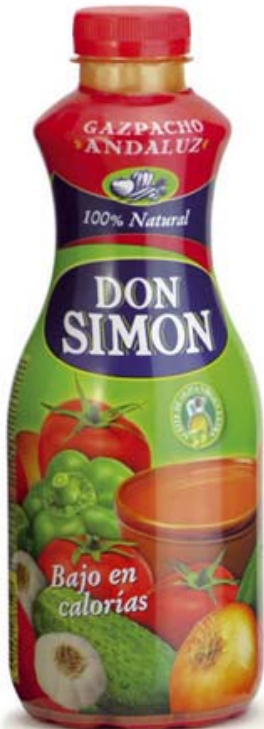
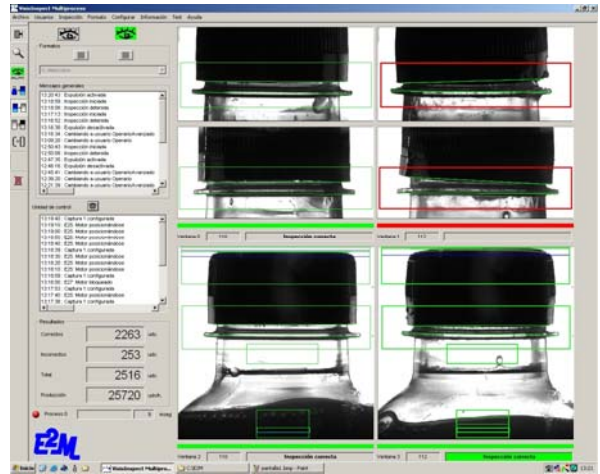




# VISIOCAP

In-line vision inspection for detection of defective capping



Complete Electro-Mechanical Solutions

# In-line capping inspection

## 3 camera views for detection of defective capping

As bottles pass through the inspection enclosure the system snaps 3 images of the cap.  
This solves false accepts, which typically occur when using a single camera view.  
Measurements are taken at 6 different points, every 60°.

### Description

Complete turnkey installation in client's production line for inspection of following parameters :

- Missing cap
- Cap alignment
- Improper seating
- Squeezed & torn tamper evident ring
- Gaps
- Fill level

### Monitoring

- Capping heads
- Filling valves

### Rejection of defective caps

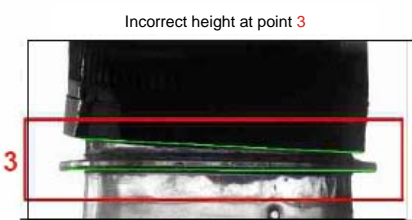
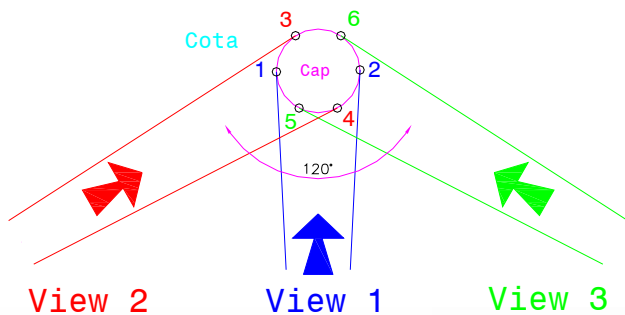
E2M also provides a large range of rejection systems for defective caps. Includes *Multistep V* a stable rejector, which can be cleaned with wash down without damaging the

### Features

- 2 CCD B/W 1024\*768 pixel cameras
- Backlighting system
- High speed operation
- Stainless steel component enclosure
- Intel DualCore Pentium D
- 17" TFT monitor
- WinXP based user friendly interface
- Real time statistics
- Container tracking with encoder
- Built-in alarms and rejection management
- USB, Ethernet plus remote control

### Advantages

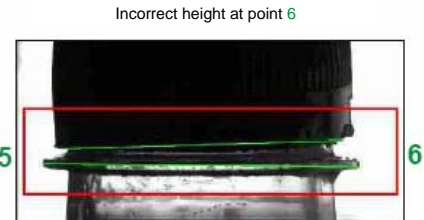
- Easy installation over existing conveyor
- Compact, silent and robust
- Low maintenance costs
- Easy format change over
- Good ROI
- Automatic height adjustment of inspection unit
- System for multiple formats
- Intuitive parameter adjustment
- Remote control (Ethernet or modem)
- "Remote Service Connection" from E2M factory
- Management of rejection and alarms



View 2



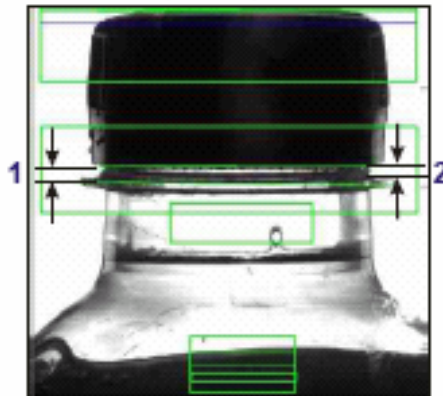
Front view apparently ok but bad cap seat at opposite side



View 3

### Products

- Milk based drinks
- Juices, nectars
- Still water, still beverages
- Beer
- Energy drinks
- Edible Oil
- Sauces and dressings



View 1

### Filling conditions

- Aseptic fill
- Cold fill
- Hot fill
- N2 Dosing

### Estudis Electro—Mecanics s.l.

C/ Permanyer, 243  
08205 Sabadell - Barcelona  
ESPAÑA

Tel. (+34) 93 720 85 40  
Fax. (+34) 93 720 85 25  
comercial@e2m-inspect.com  
www.e2m-inspect.com

E2M also designs custom systems to accommodate specific needs of each client.  
Data subject to modification without prior notice, according to technical advance and product development.

